

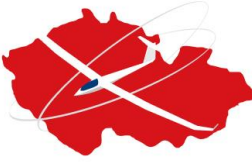
**JWGC**  
2022



# DAILY BRIEFING

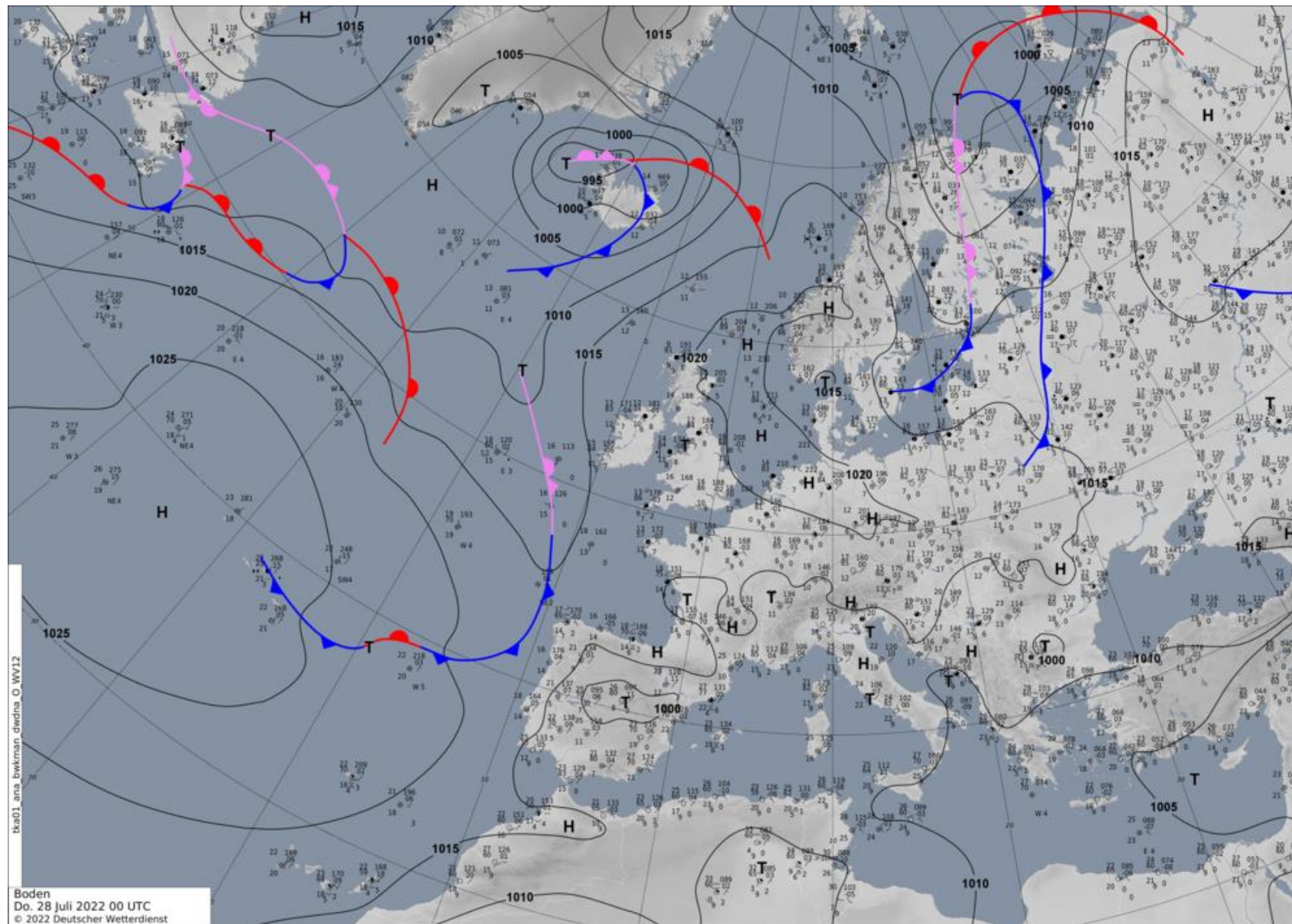
OFFICIAL TRAINING DAY 2 – 28/7/2022

# REMARKS TO YESTERDAY

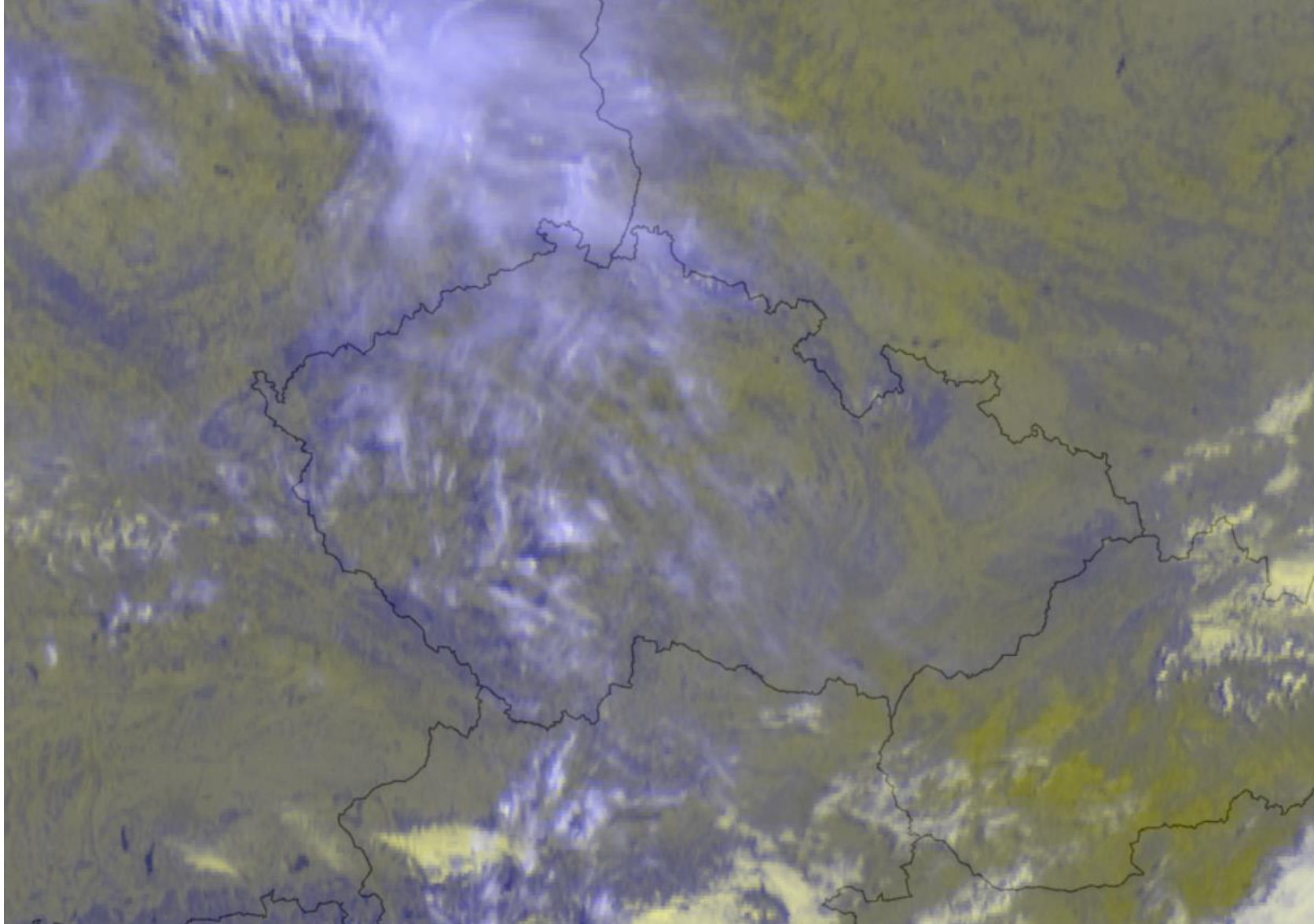


- FOLLOW GRID TIMES
- BE READY AT GRID AT LEAST 15  
MINUTES BEFORE FIRST LAUNCH

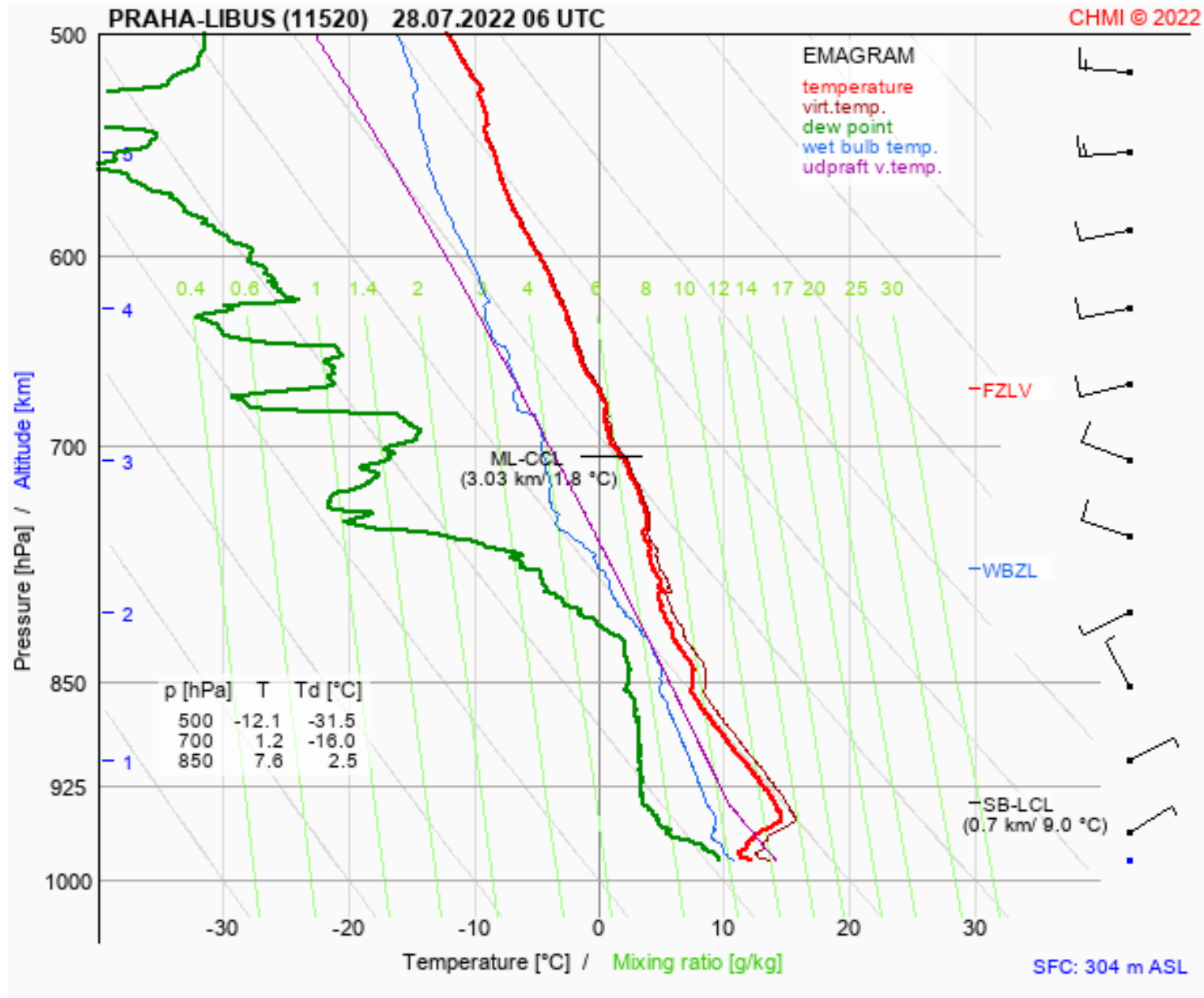
# WEATHER



# WEATHER



# WEATHER

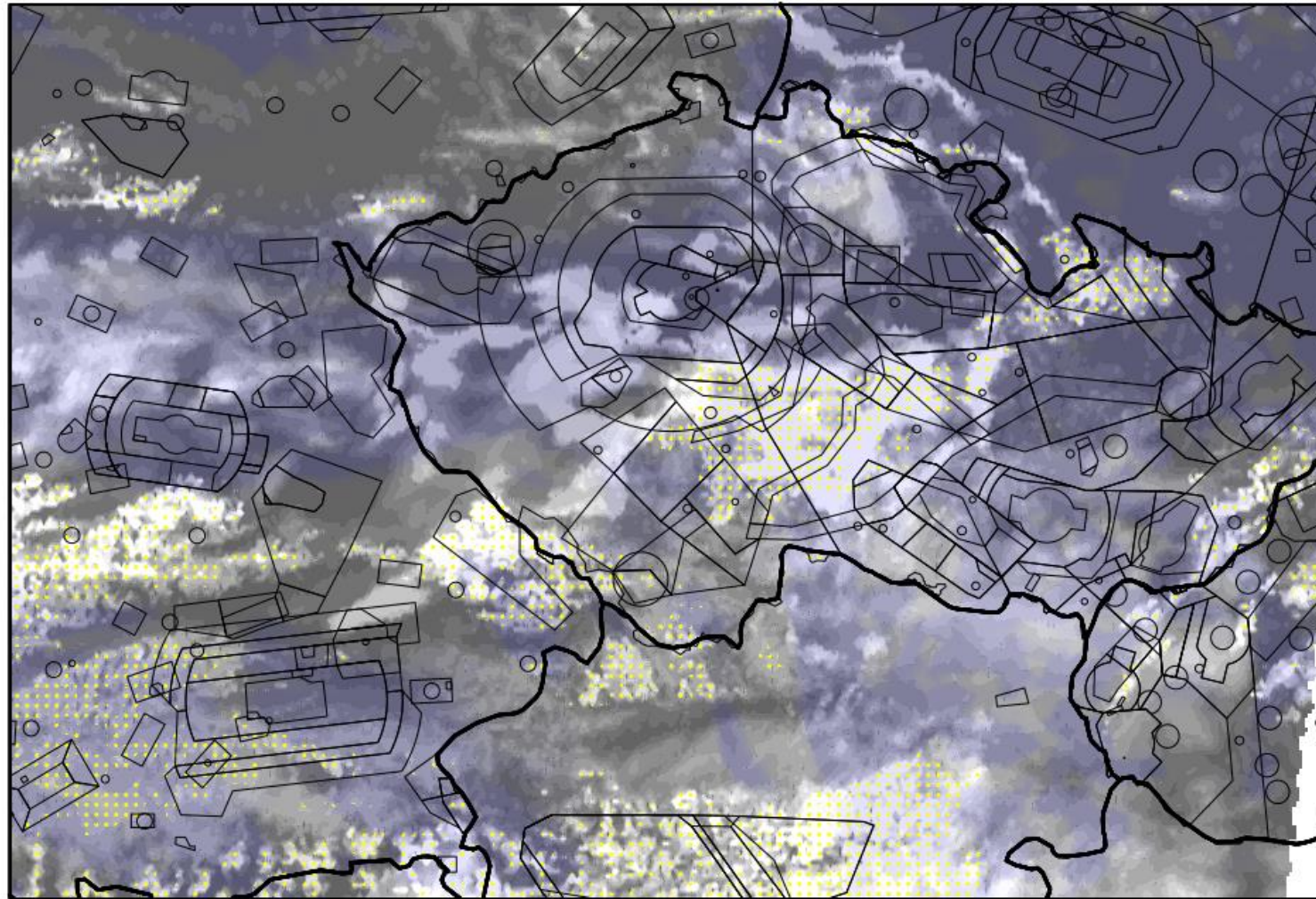


# WEATHER



cloud cover [%]

thursday 28.07. 2022 10:00 utc



skc

sct

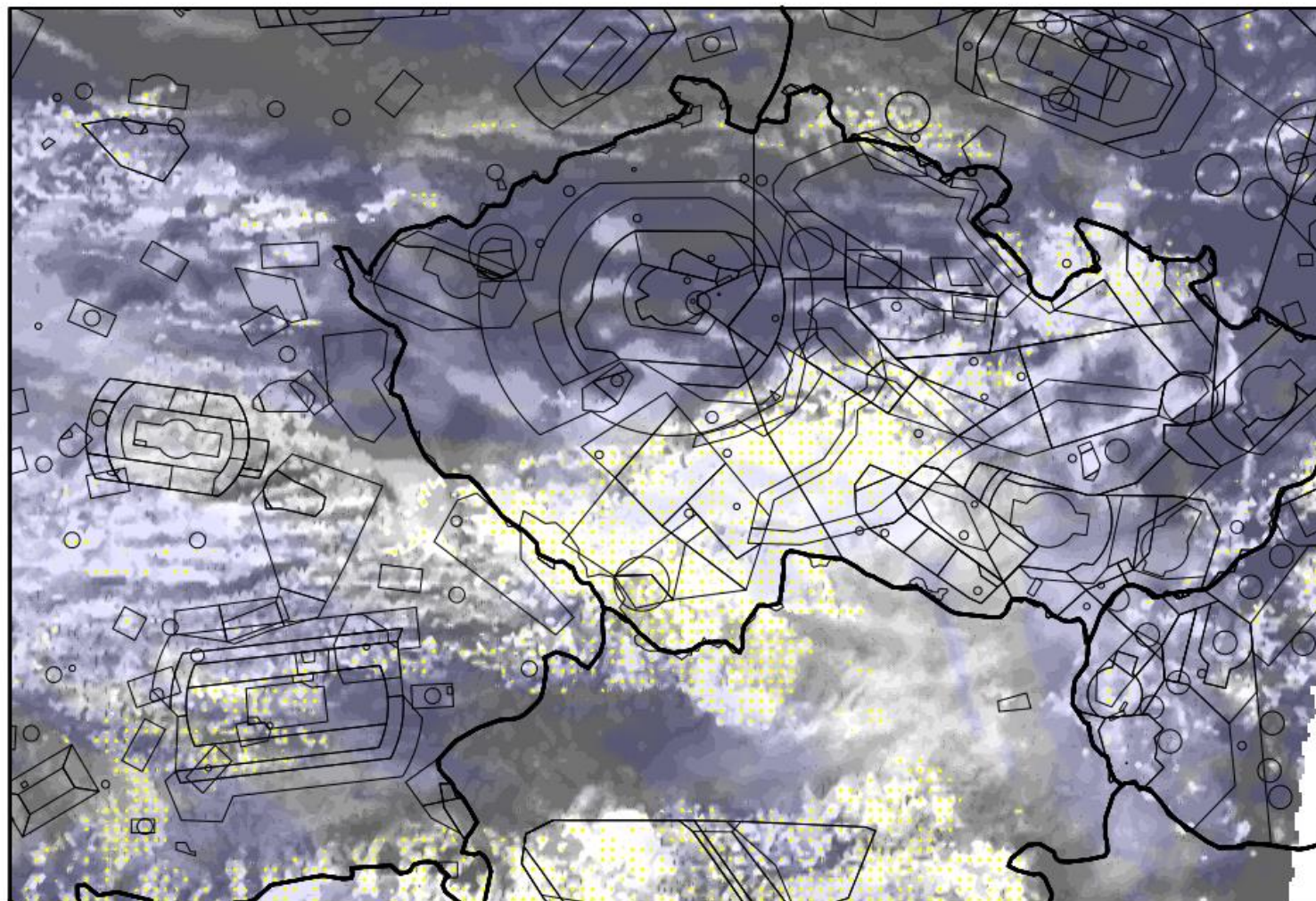
ovc

# WEATHER



cloud cover [%]

thursday 28.07. 2022 12:00 utc



skc

sct

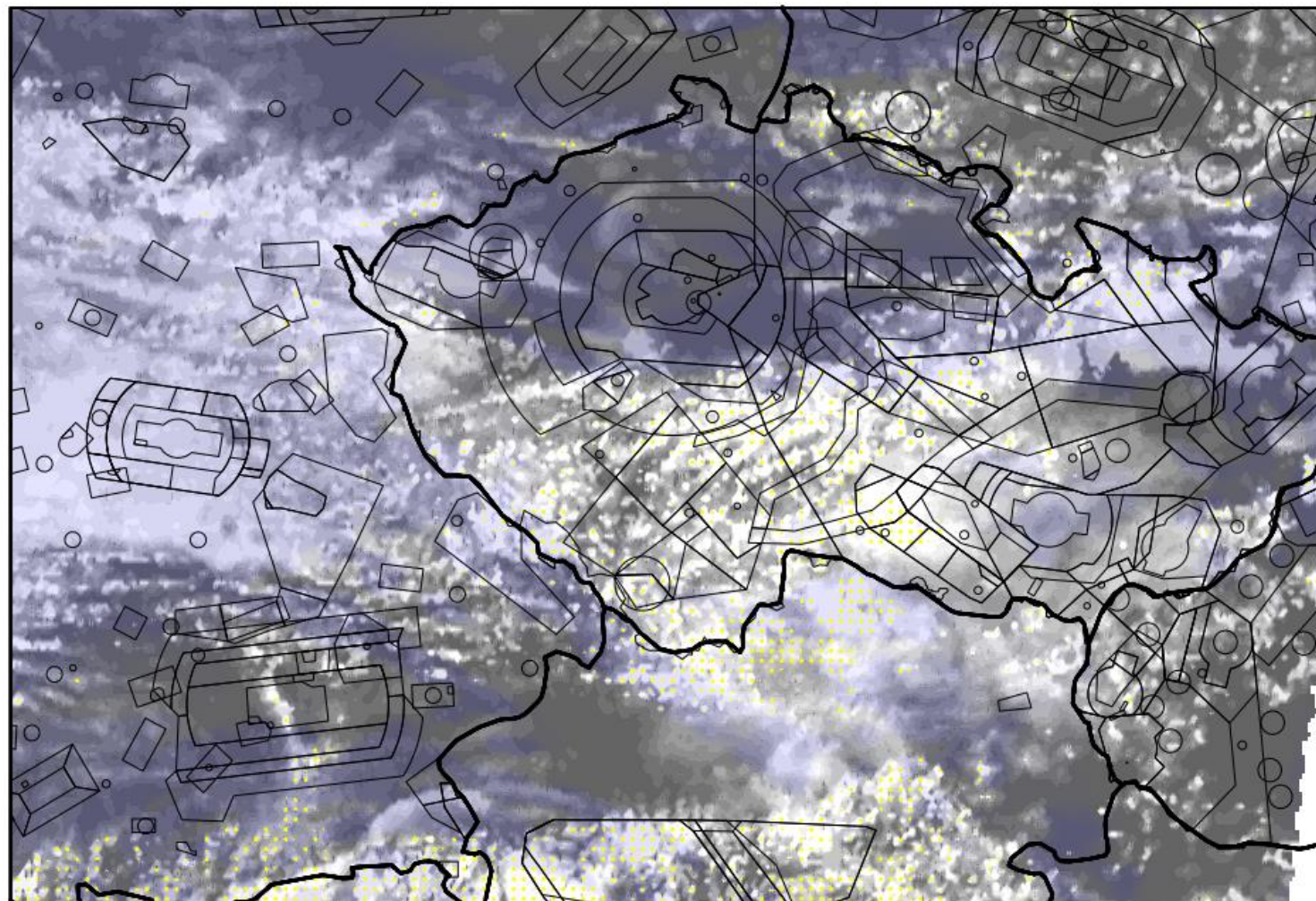
ovc

# WEATHER



cloud cover [%]

thursday 28.07. 2022 14:00 utc



skc

sct

ovc

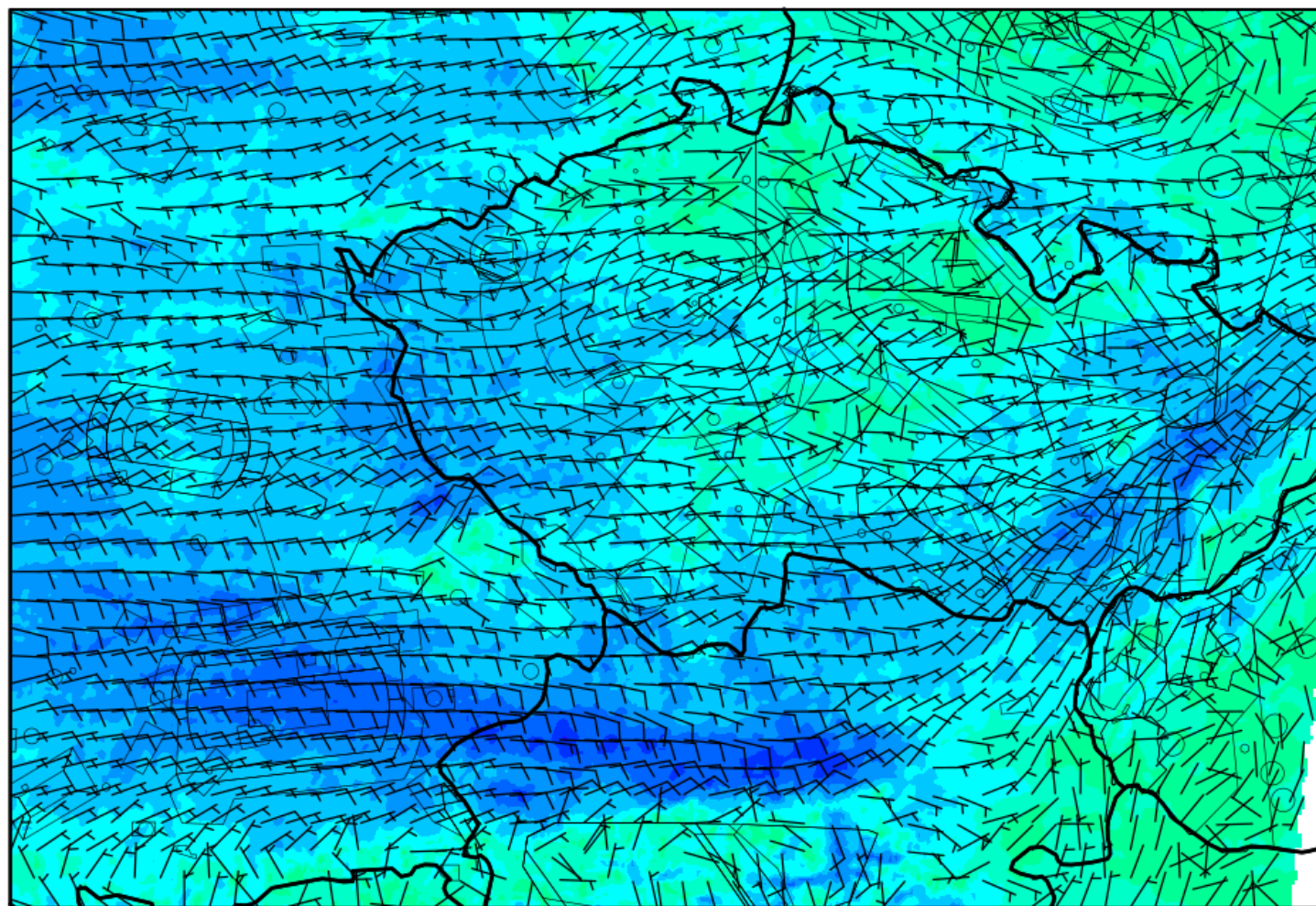


# WEATHER

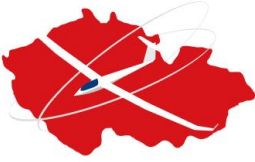


wind at 10m [m/s]

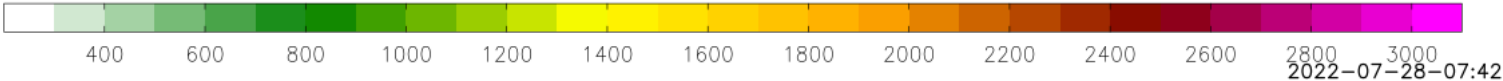
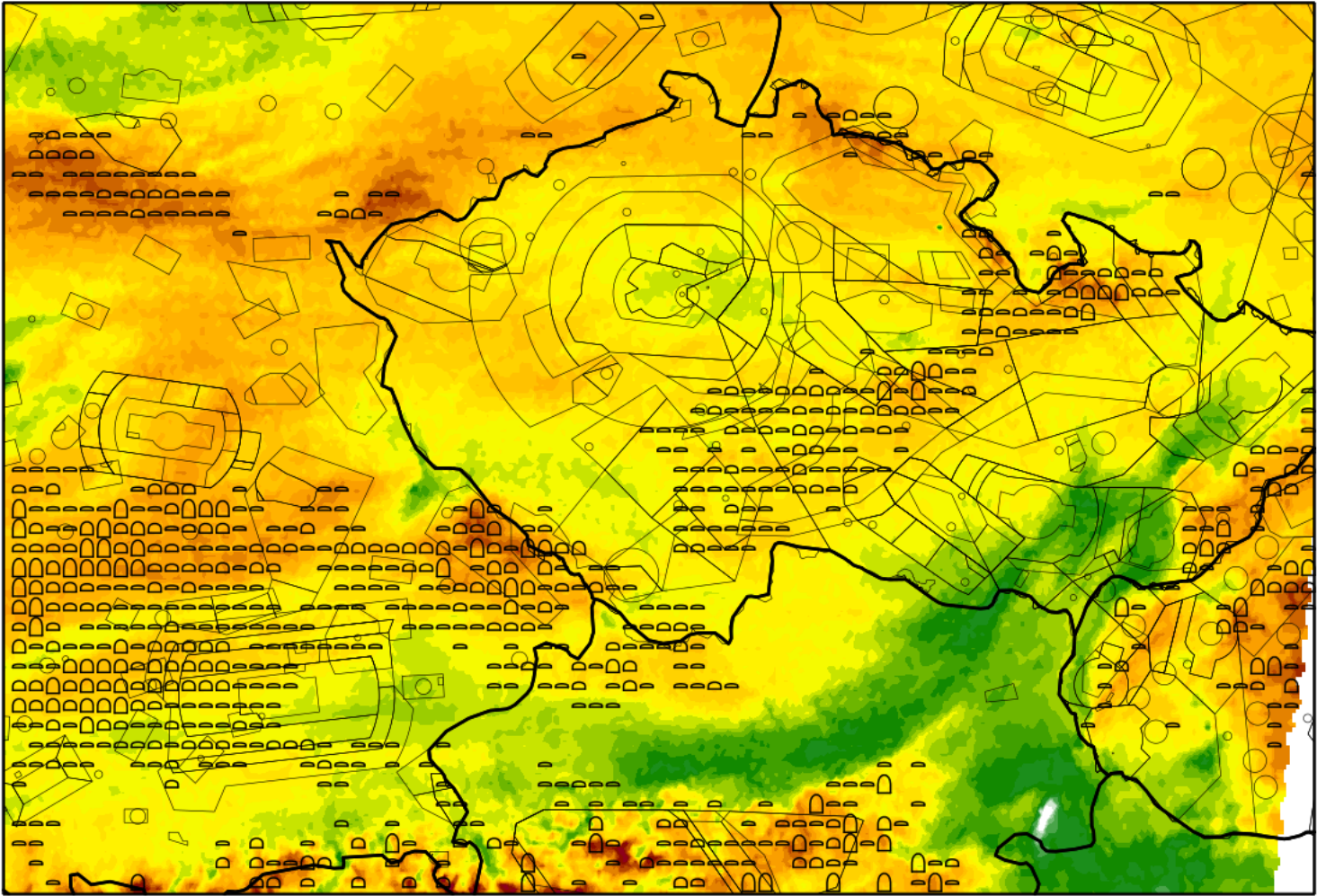
thursday 28.07. 2022 10:00 utc



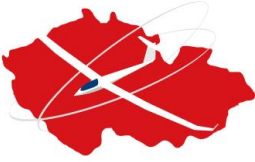
# WEATHER



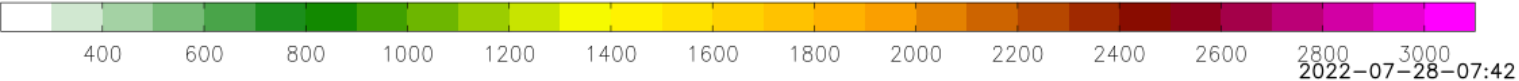
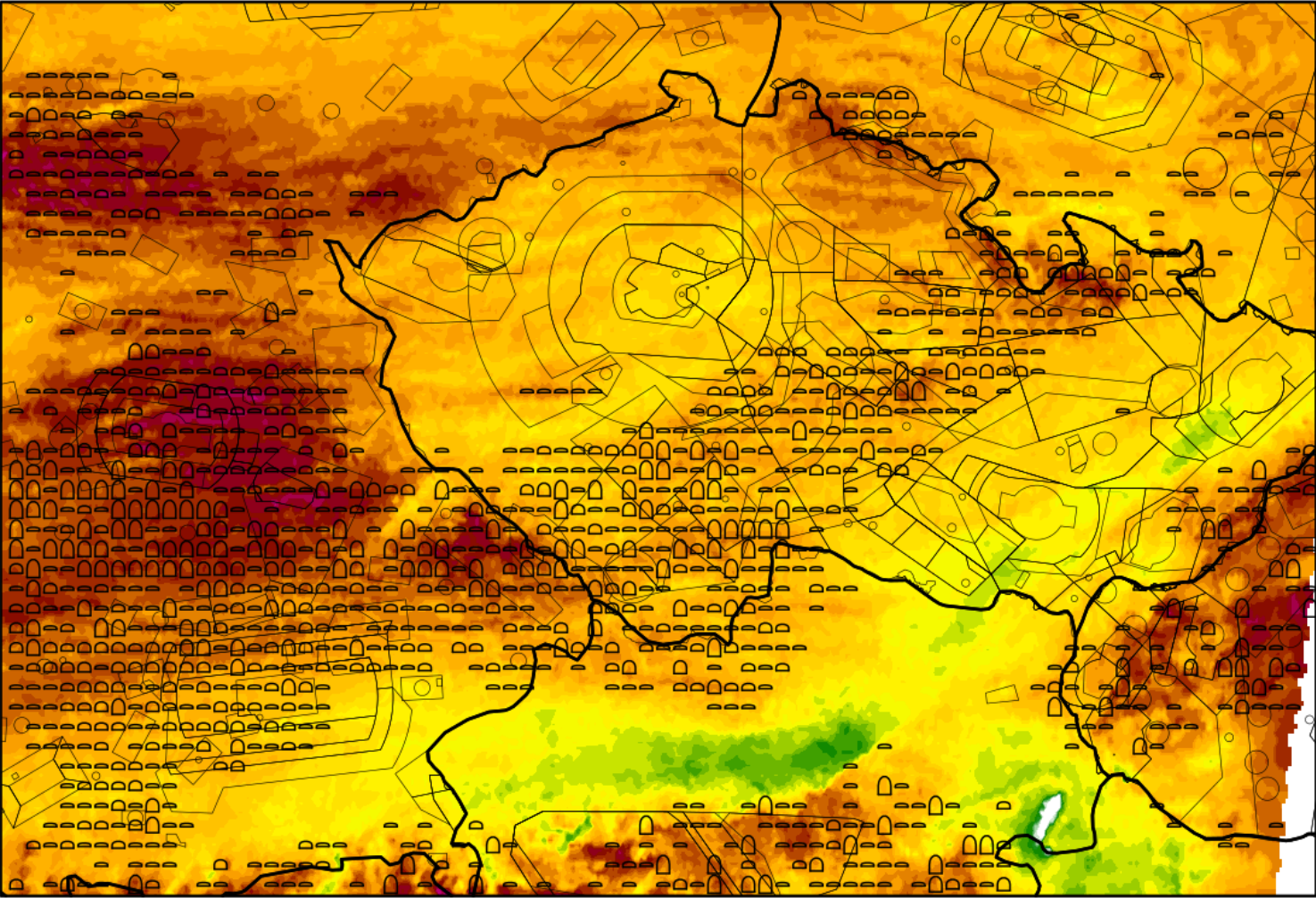
blue thermal + cu [m]      thursday 28.07.2022 10:00utc



# WEATHER



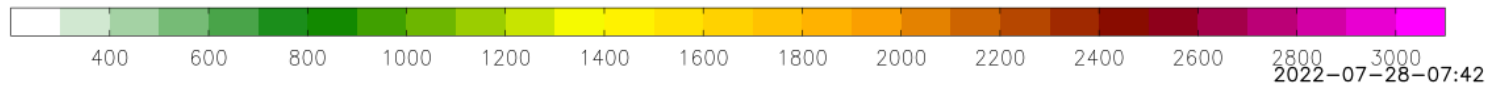
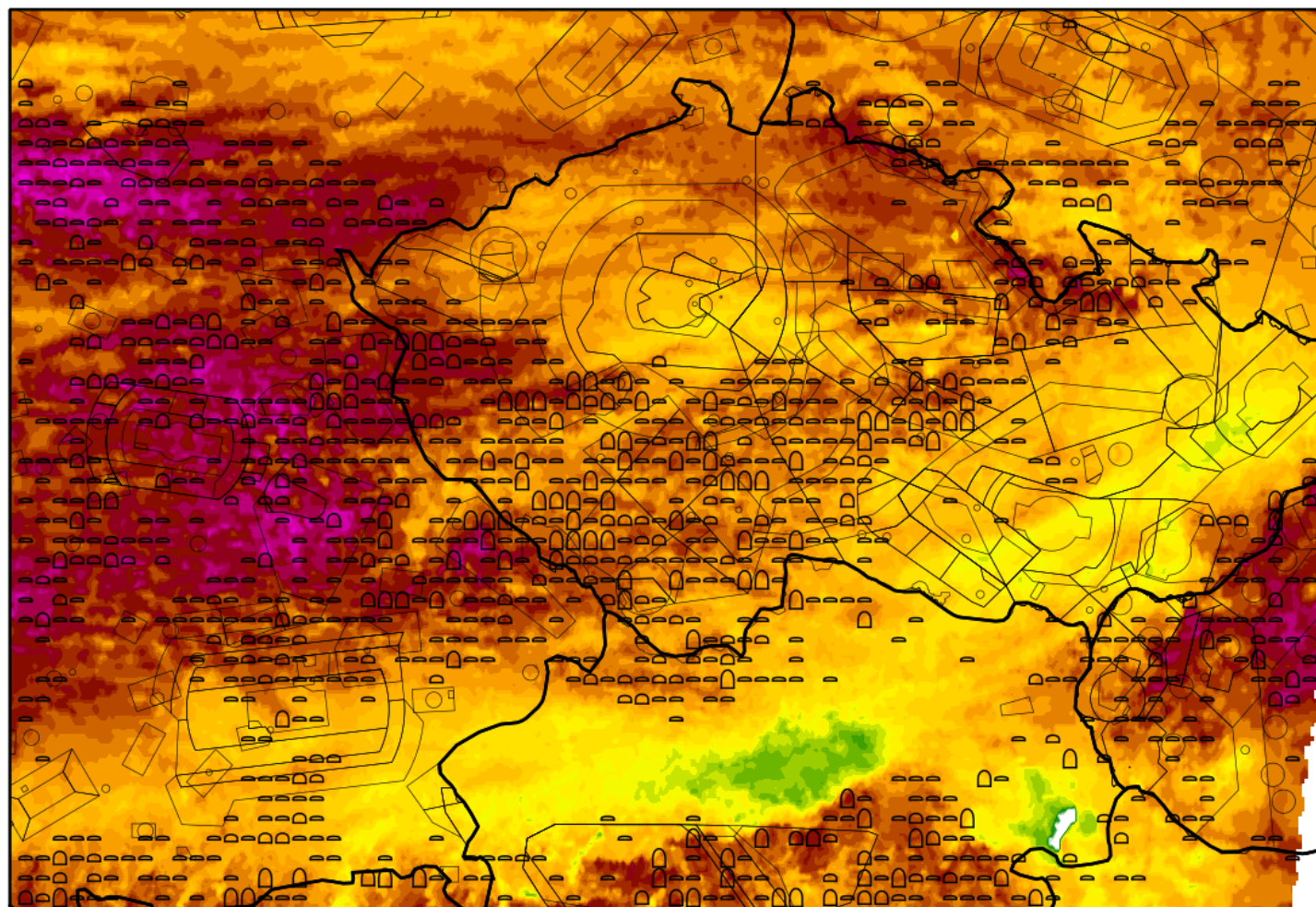
blue thermal + cu [m]      thursday 28.07.2022 12:00utc



# WEATHER



blue thermal + cu [m]      thursday 28.07.2022 14:00utc

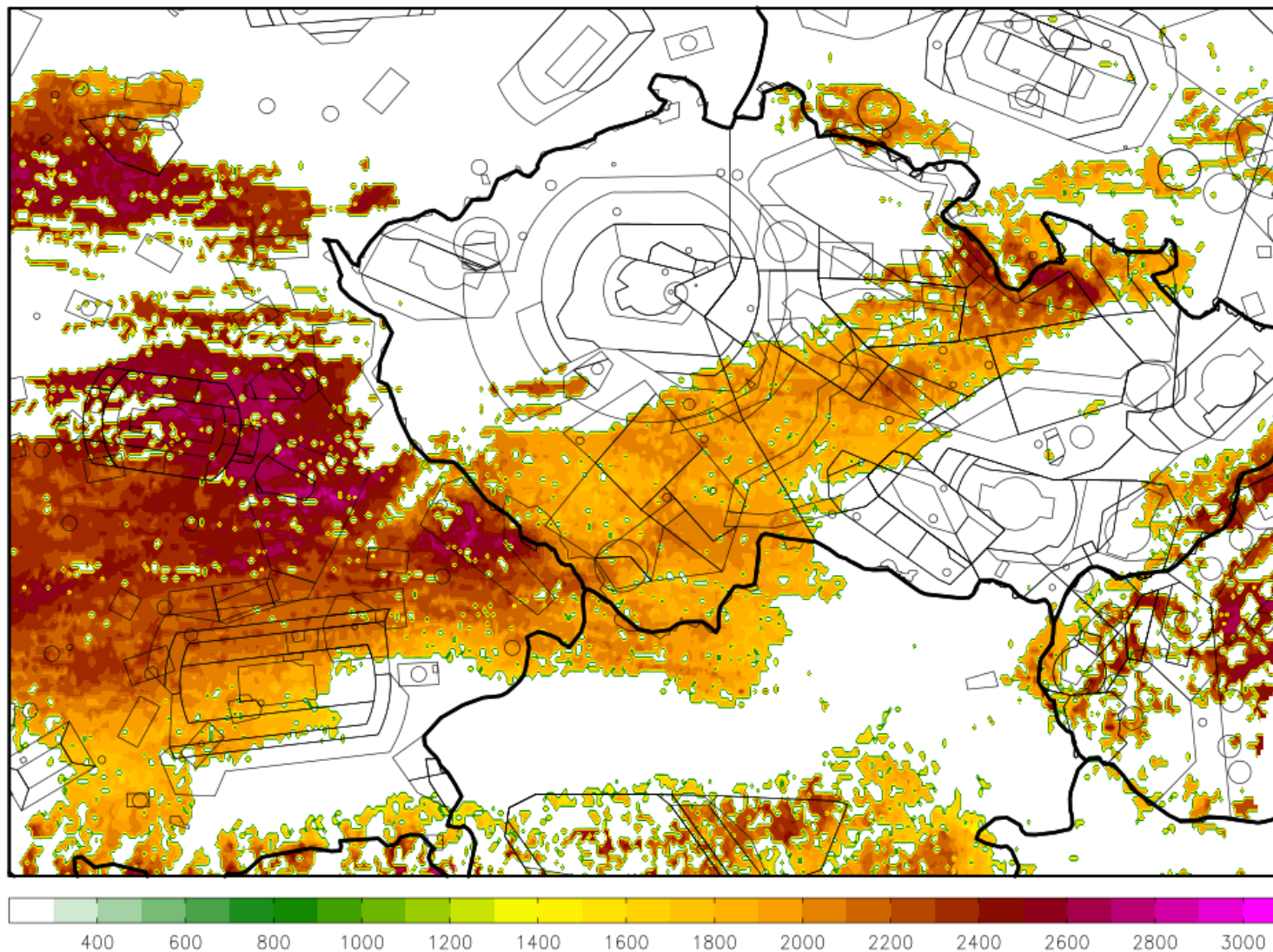


# WEATHER



top of cu cloudbase [%]

thursday 28.07. 2022 12:00 utc

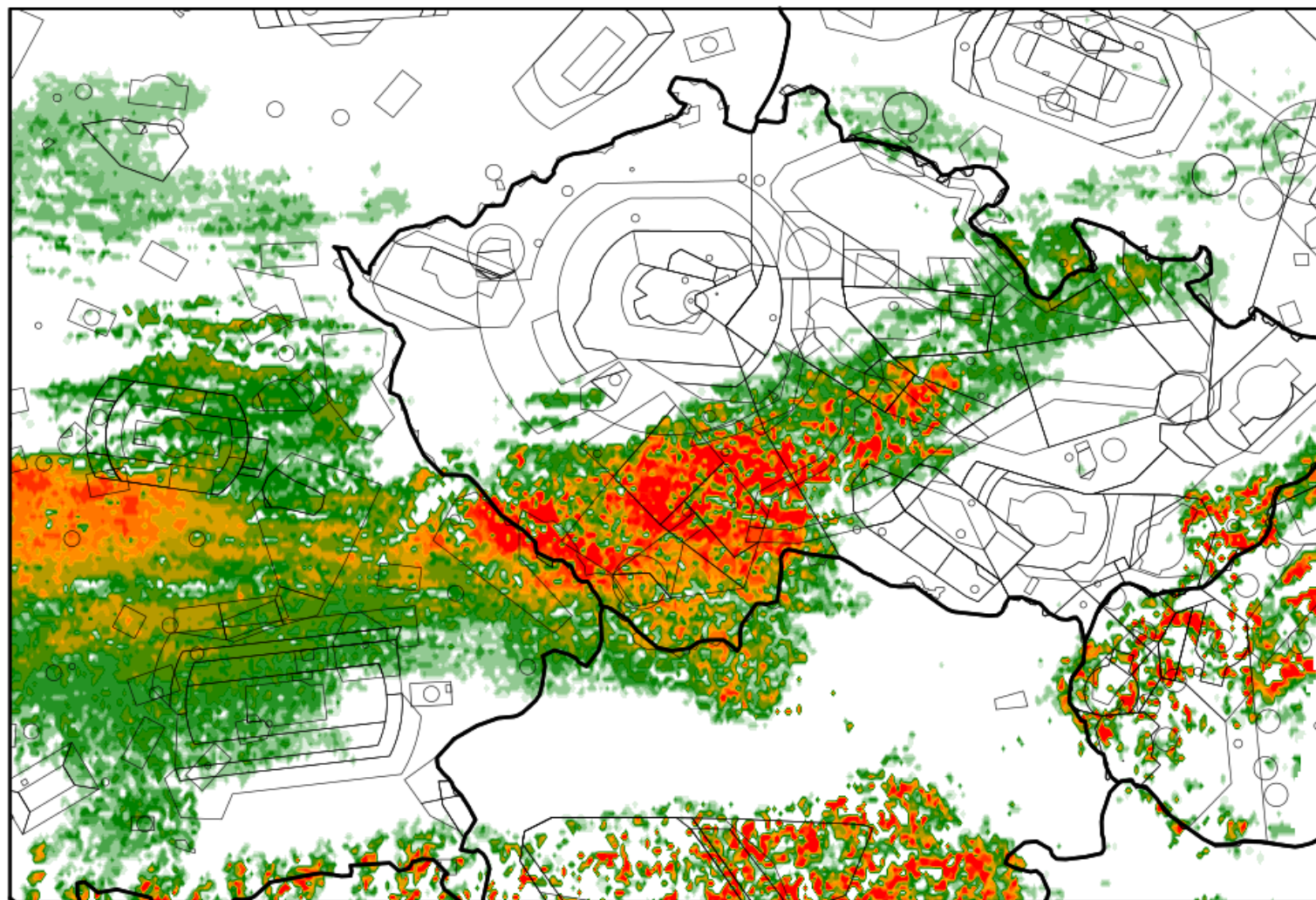


# WEATHER



thickness of cu [m]

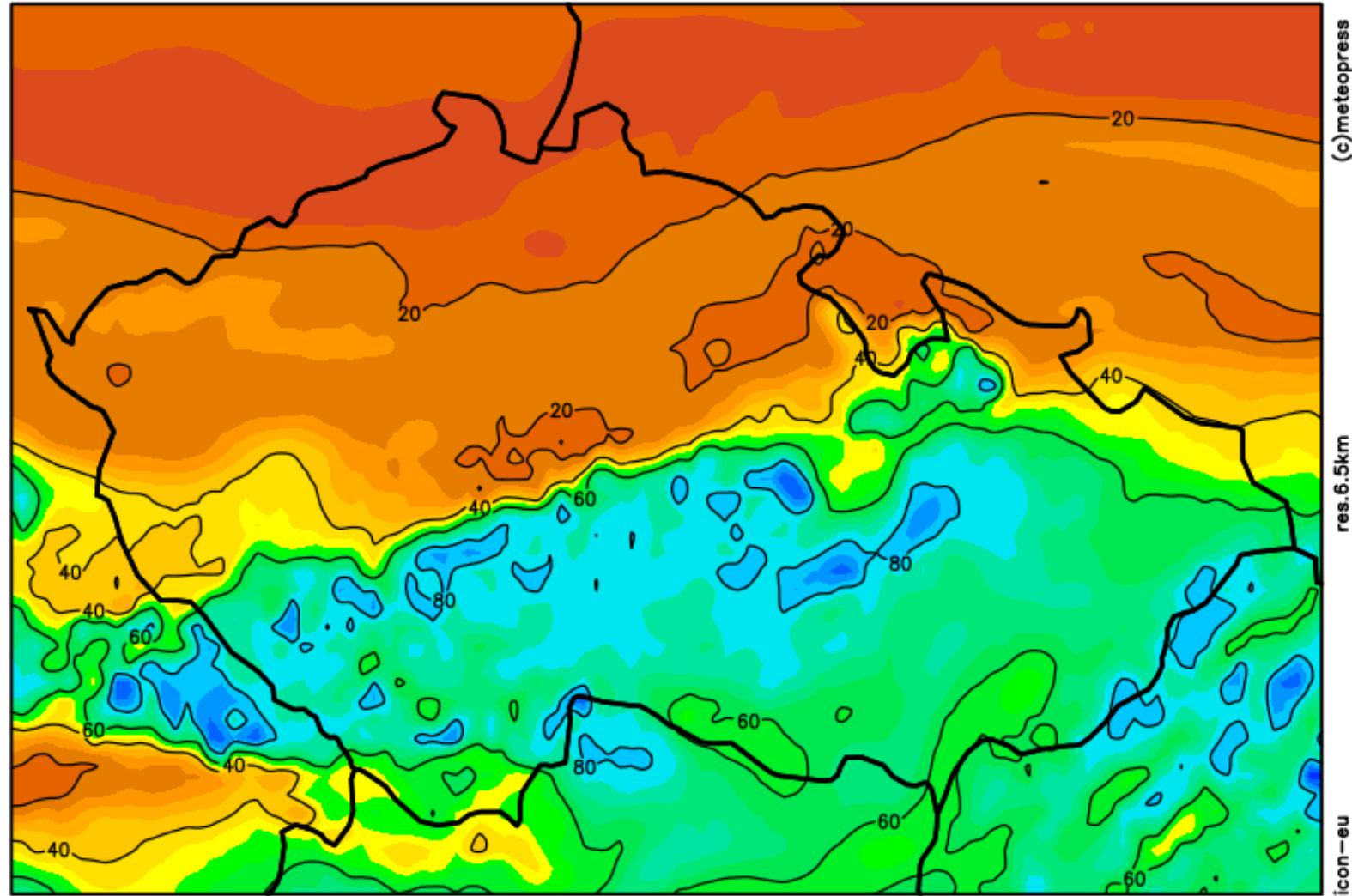
thursday 28.07. 2022 12:00 utc



# WEATHER



vlhkost 700 hPa [%] čtvrtek 28.07.2022 13:00utc

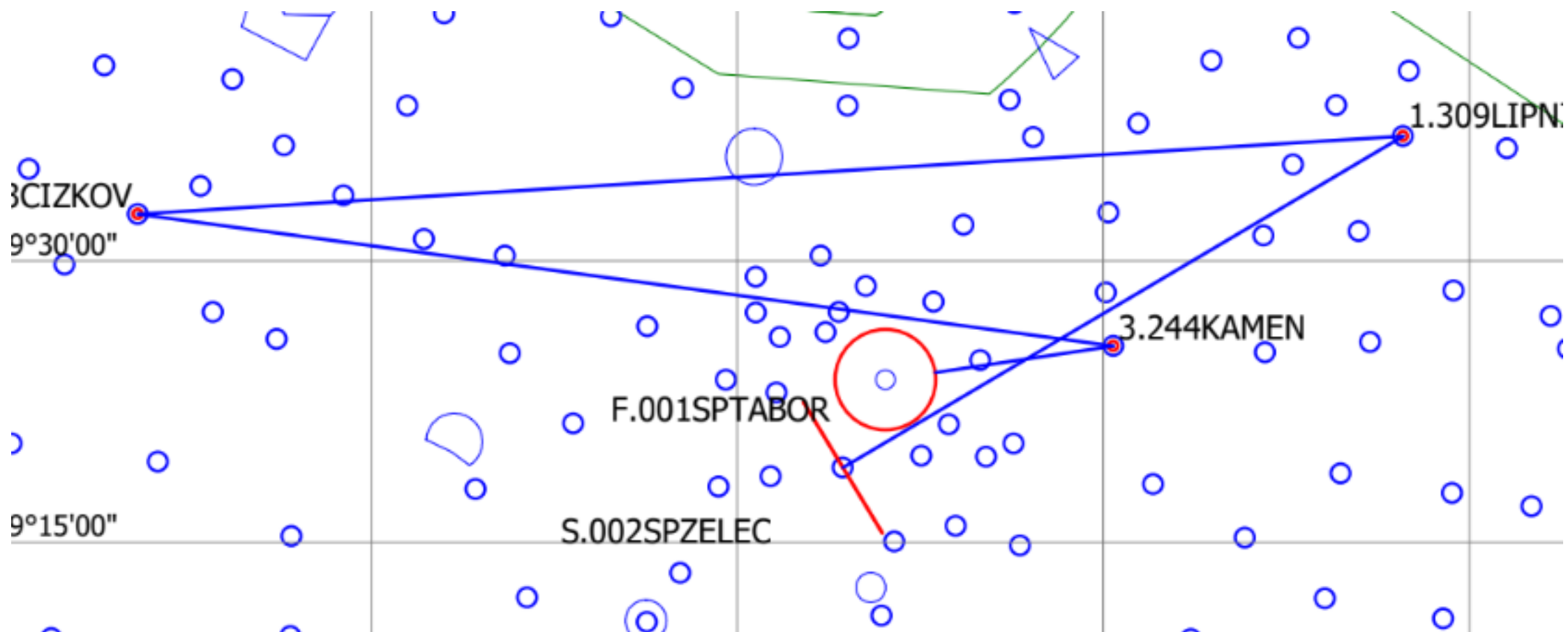


0 5 10 15 20 25 30 35 40 45 50 55 60 65 70 75 80 85 90 95 100

# TASK FOR CLUB CLASS



## 303.9 km

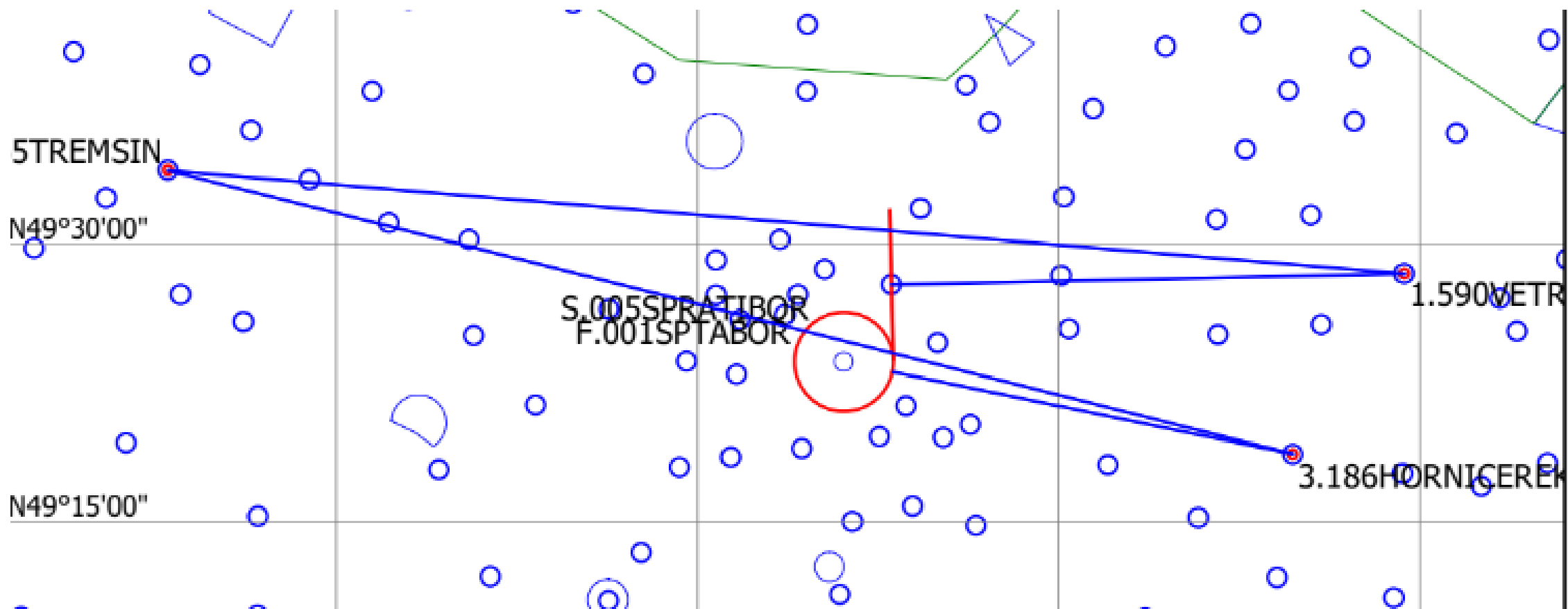




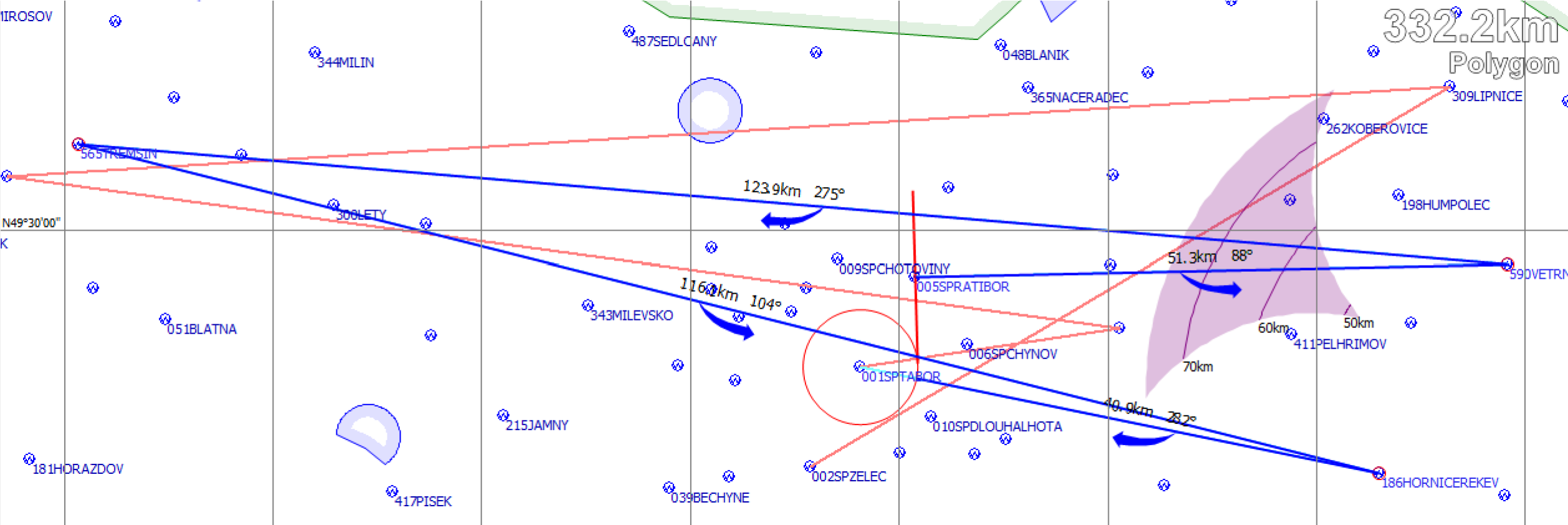
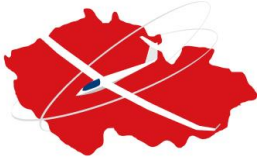
# TASK FOR STANDARD CLASS



332.2 km



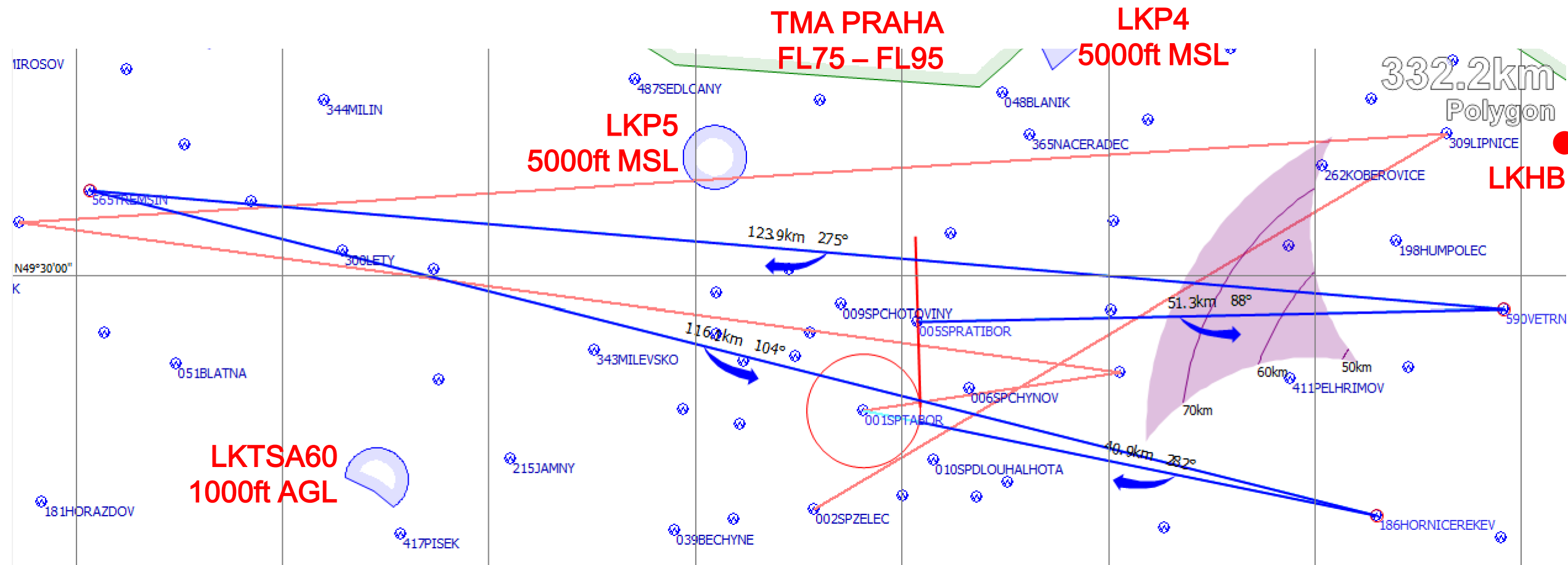
# TASK OVERLAY



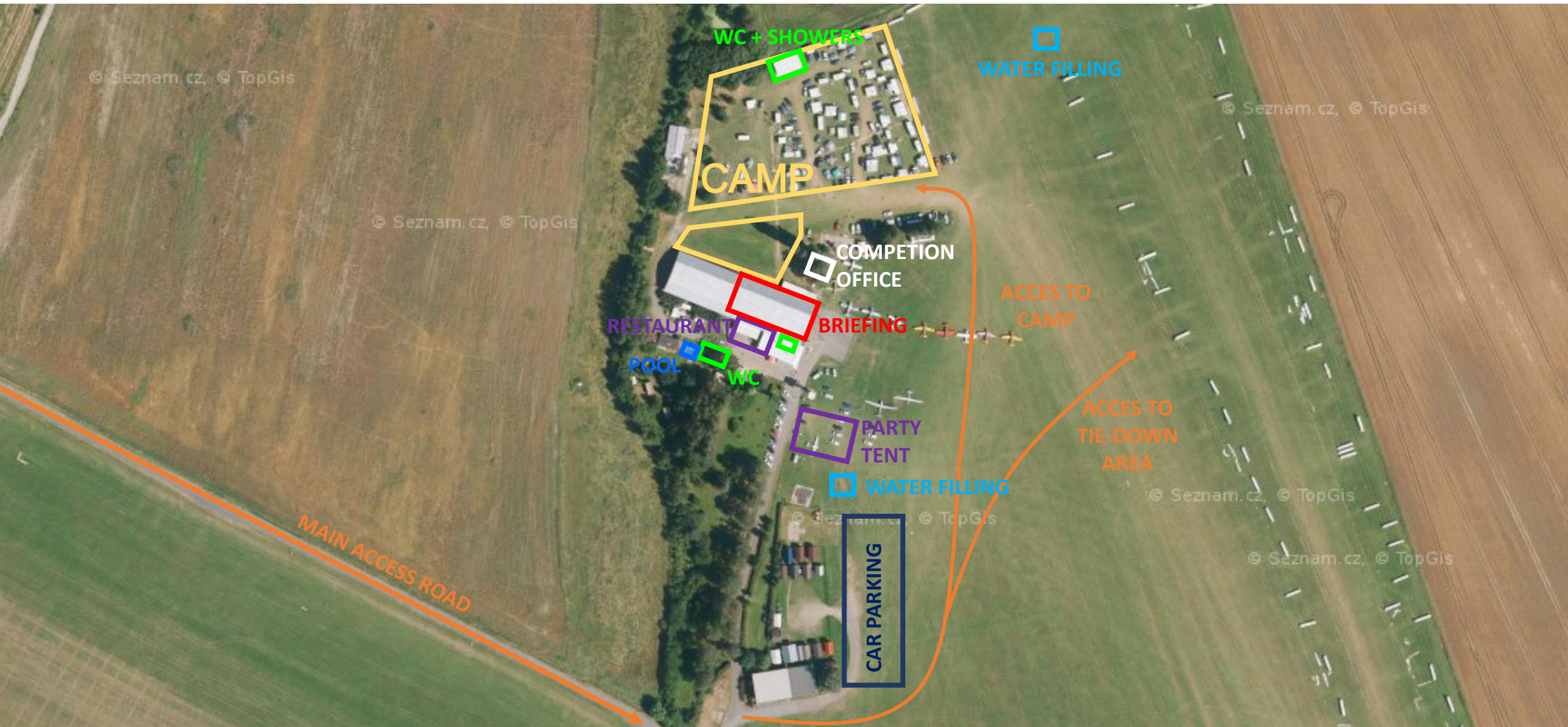
# AIRSPACE



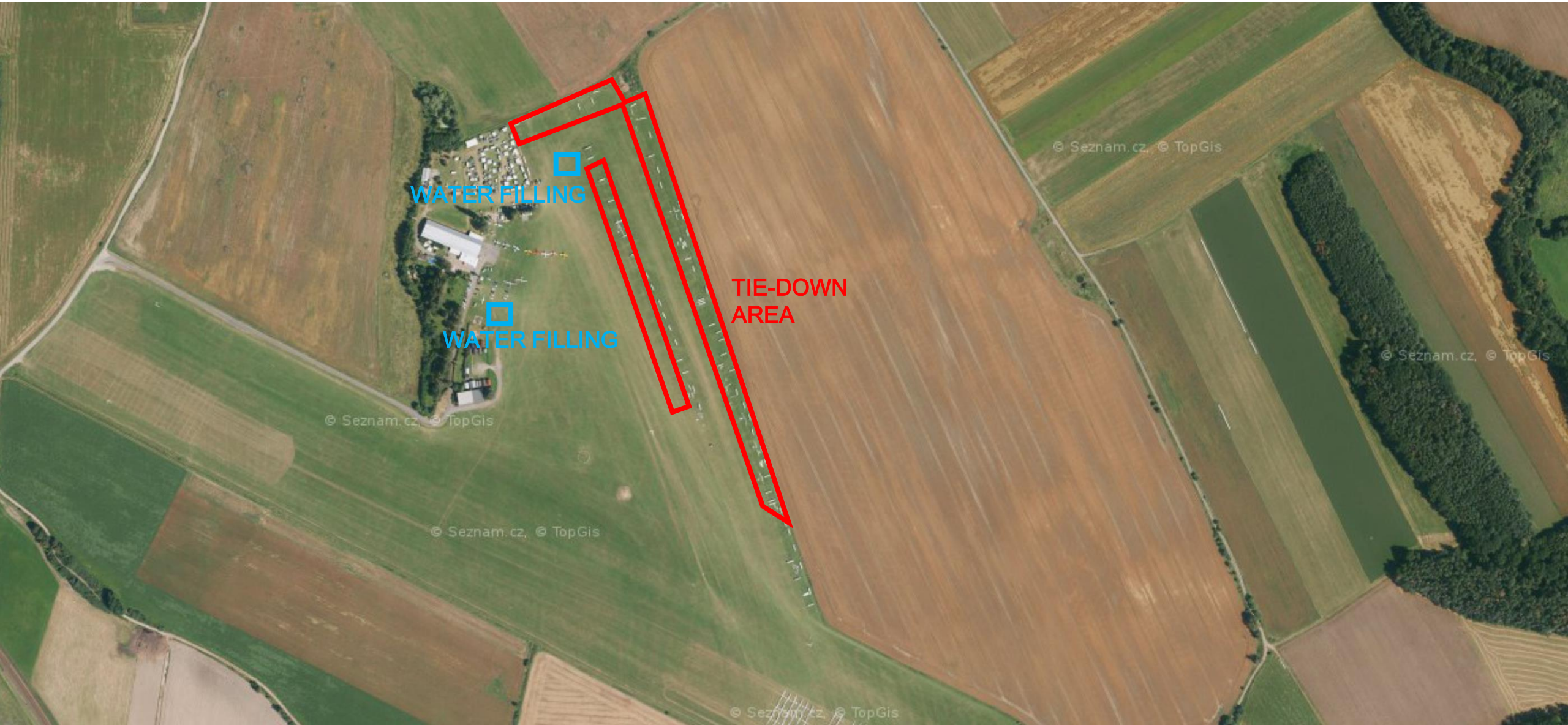
## SIMULTANEOUS COMPETITION AT LKHB



# AIRFIELD FACILITIES



# GLIDER TIE-DOWN AREA



# CONTEST SITE BOUNDARY



# GRID RWY 29



GLIDER LANDING

TOW PLANE LANDING

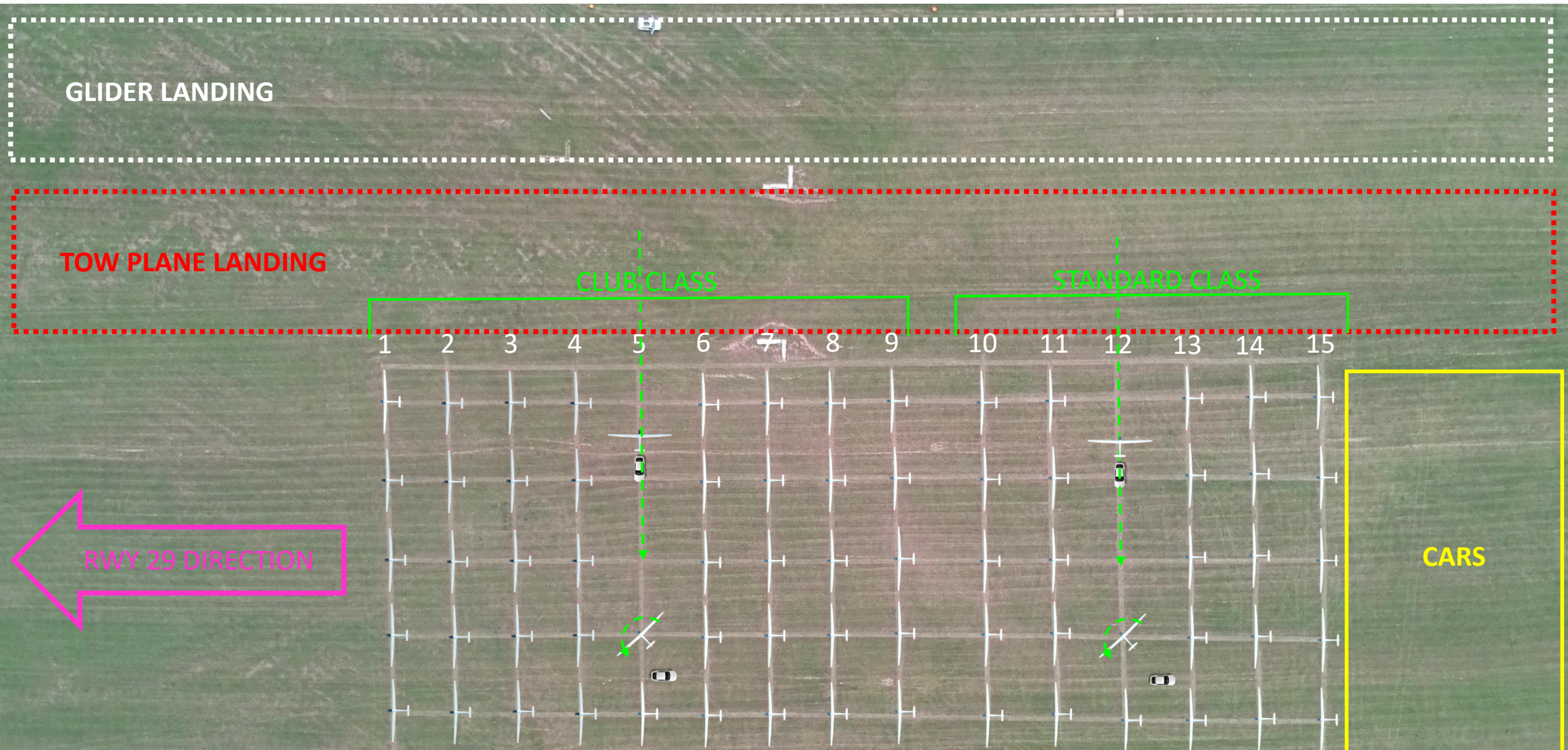
CLUB CLASS

STANDARD CLASS

1 2 3 4 5 6 7 8 9 10 11 12 13 14 15

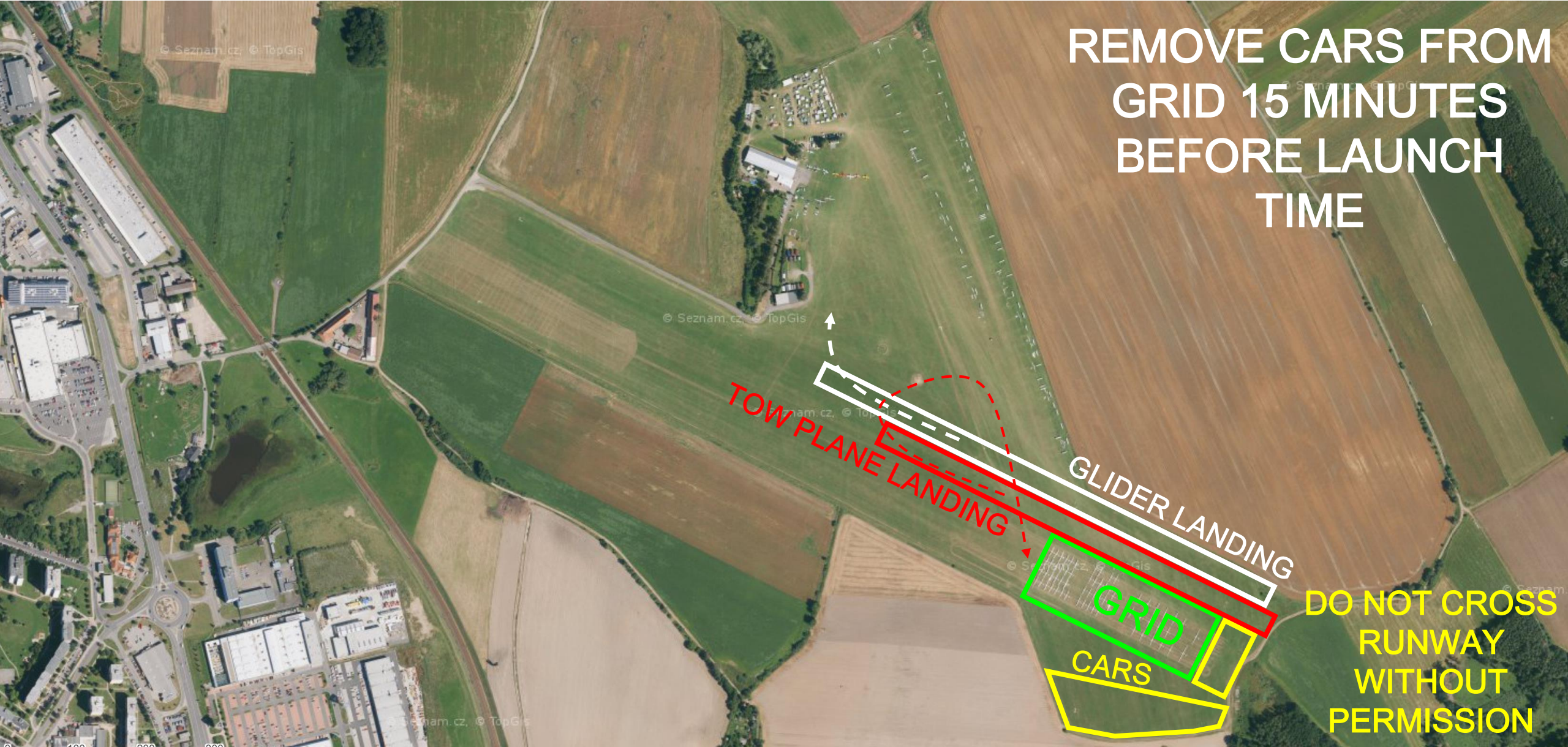
RWY 29 DIRECTION

CARS



# TAKE-OFF RWY 29

REMOVE CARS FROM  
GRID 15 MINUTES  
BEFORE LAUNCH  
TIME



TOW PLANE LANDING

GLIDER LANDING

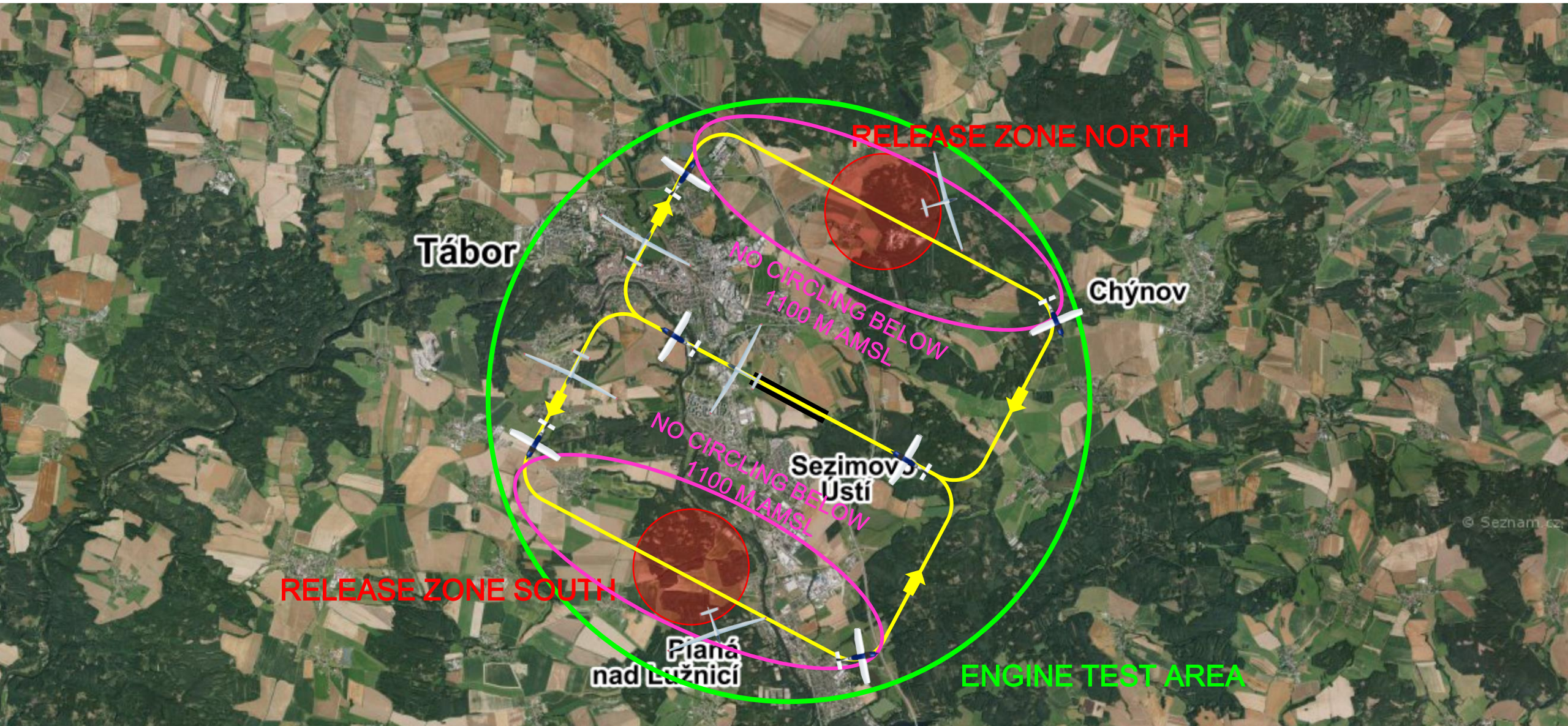
GRID

CARS

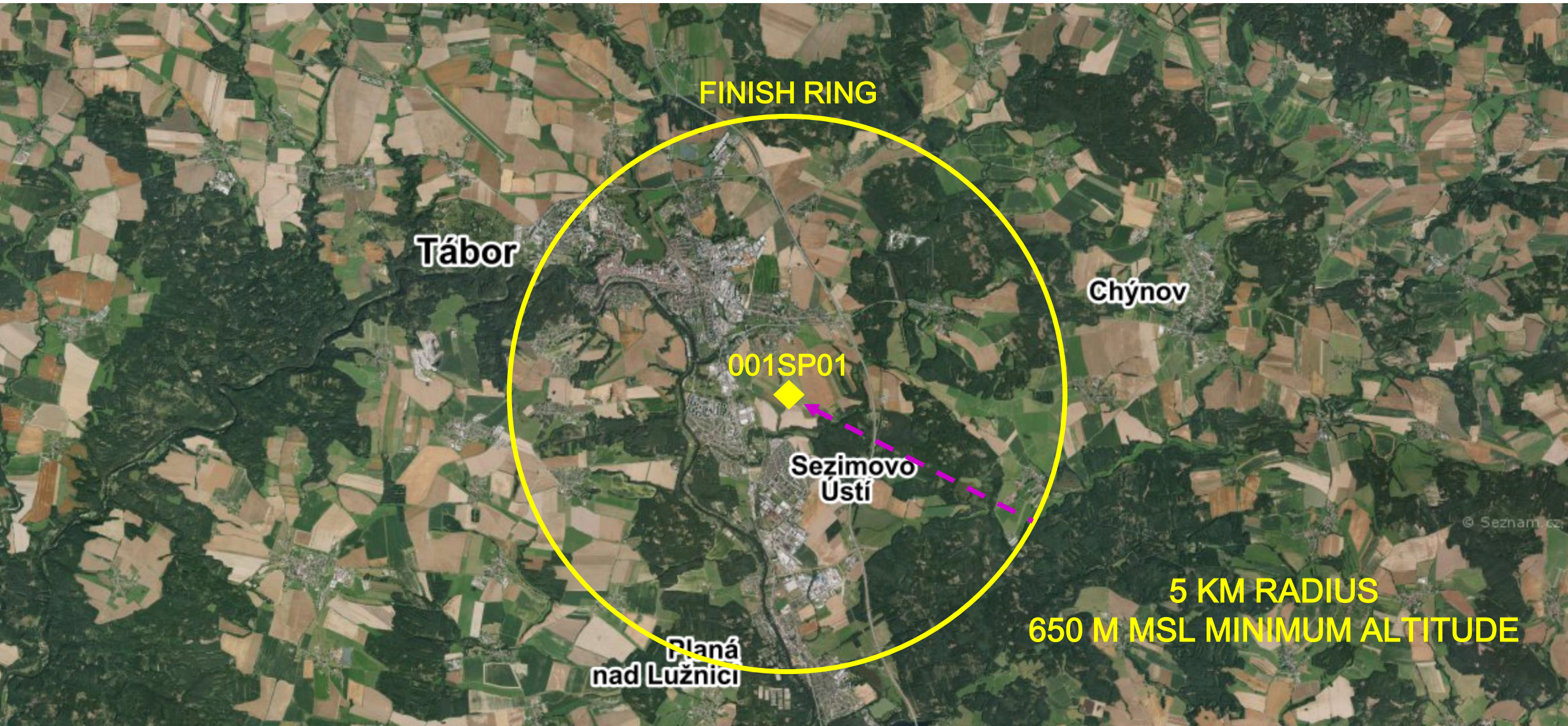
DO NOT CROSS  
RUNWAY  
WITHOUT  
PERMISSION



# AEROTOWS RWY 29



# FINISH RWY 29



FINISH RING

Tábor

Chýnov

001SP01

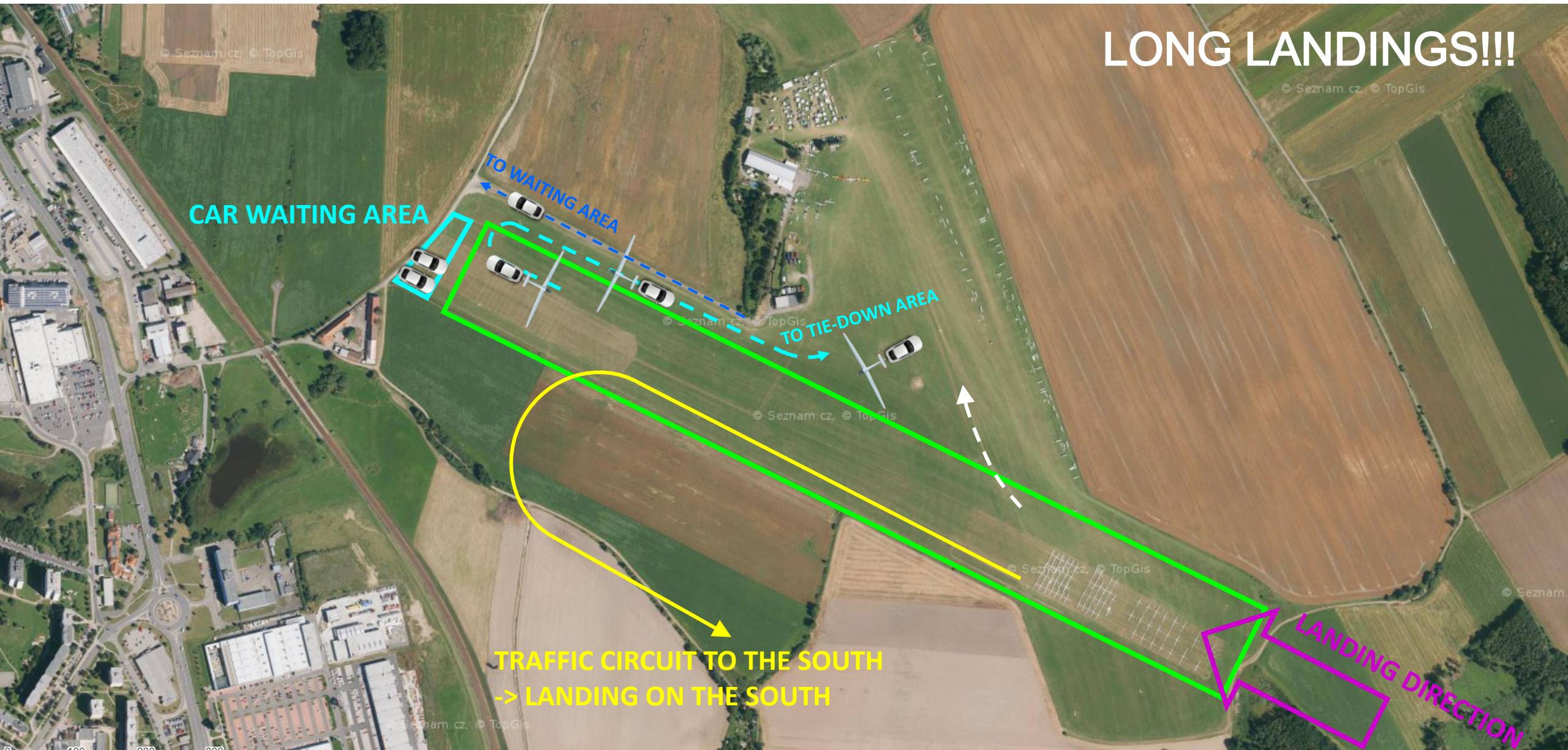
Sezimovo  
Ústí

Planá  
nad Lužnicí

5 KM RADIUS  
650 M MSL MINIMUM ALTITUDE

# LANDING RWY 29

**LONG LANDINGS!!!**



CAR WAITING AREA

TO WAITING AREA

TO TIE-DOWN AREA

TRAFFIC CIRCUIT TO THE SOUTH  
-> LANDING ON THE SOUTH

LANDING DIRECTION

# INFORMATION FOR TODAY



- START LINE WILL OPEN 30 MINUTES  
AFTER LAST LAUNCH IN CLASS

# INFORMATION FOR TODAY



- PRE-START ALTITUDE LIMIT WILL

**NOT** BE USED **TODAY**

# INFORMATION FOR TODAY



- PEV START PROCEDURE **IN USE**

**TODAY**

- PEV WAIT TIME: 5 MINUTES

- PEV START WINDOW: 8 MINUTES

- MAX NUMBER OF STARTS: 3

# FILE DELIVERY

- SEND ALL FILES TO [IGC@POHODA.COM](mailto:IGC@POHODA.COM)
- SEND BACKUP FLIGHT RECORDER FILE
- **45 MINUTES FOR FILE DELIVERY**
- INCLUDE CN IN EMAIL SUBJECT
- DO NOT SEND ZIP FILES
- ENSURE CORRECT FILE HEADER

# REMARKS FROM SCORER



- VIS, BV, WE, DI, 95, HAL INCORRECT FIX RATE
- FIX RATE MUST BE 1 SECOND ON BOTH RECORDERS
- MOBILE PHONE (XC SOAR) IS NOT AN APPROVED FLIGHT RECORDER



# INFORMATION FOR TODAY



- RUNWAY IN USE: 29
- FIRST LAUNCH: 11:30
- COMPETITION FREQ: 130.360
- SAFETY FREQUENCY: 121.090

# SAFETY



- LOOK OUT, LOOK OUT, LOOK OUT
- STAY HYDRATED
- FLY SAFE

# JWGC

2022



Jihočeský kraj



NADACE ČEZ



GRADIENT



FLOWBOX

Credo.

eclipse.

Canon

FOPO II

HpH  
sailplanes

IMI  
GLIDING

OKAPOVÉ CENTRUM  
NP GROUP S.r.o.

Marek Dvořák  
RENOMIA NETWORK  
Člen největší sítě poskytovatelů zprostředkovatelů v ČR

DELUX  
BY GAGULA

DESIGN

lxnav

navTer

SoaringXX

NOVAK  
WINGCOVERS